

# St John's C of E Infant School

## Newsletter 22nd May 2026

Sunshine and smiles !



We have had a wonderful term so far, and the sunshine just in time for the holiday is such welcome news

We would like to extend a huge thank you to Mrs Robinson, who, with the support of others, has worked so hard to redesign our school entrance gardens. From tulips to alliums, the display this spring has been simply stunning. It has also been lovely to see the bees flourishing among them, which linked beautifully with our visit from the Hive Helpers this week. They have certainly left us all buzzing with excitement about pollination, and we do hope the children enjoy sharing what they have learned with you over the holiday.

We also had a fantastic evening on Tuesday celebrating the start of our 155th year. A very big thank you to our governors for organising such a special event, and to all the staff, parents and villagers who came along to support us, we truly appreciate it. Over the coming week, we will be sharing highlights from the event on our social media, along with details of our exciting new Patron Scheme, which you will be hearing more about in the coming term.

With the warmer weather, there is also another type of 'bug' to be mindful of, as tick season will soon be in full swing. Please do check your children daily, further information is included below.

As we approach the final term of the school year, may we kindly remind everyone of the importance of good attendance, particularly when planning holidays. Our current attendance stands at 94.7%, which is slightly below our target of 95%, with the final day of last term being a particular concern at 87.5%. Every day in school really does matter, and holidays taken during term time will continue to be unauthorised.

It has been lovely to see the horticultural society cups, engraved with each class's name, displayed proudly in school. We now have our very own trophy shelf in the office, please do take a look when you are next in. We hope you have been nurturing your winning seeds at home and that they might grow into an entry for the longest bean at the autumn show!

**Please remember to give your permission and donation for the whole school trip to Marwell Zoo on Tucasi/Scopay.**

### 2026

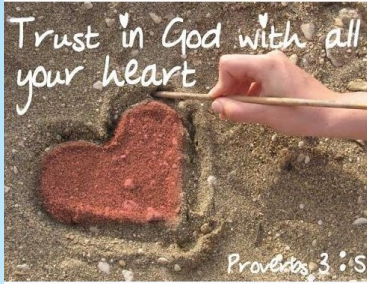
- 1st June—Start of Term
- 2nd June—Class Photos
- 3rd June—Maypole dancing workshop
- 10th June—Whole school trip to Marwell Zoo
- 13th June—Village Fete & country dancing
- 24th June—Sports Day & picnic
- 3rd July—Yr 2 , FYC Singing Spree
- 3rd July—Yr 1 Class assembly
- 4th July—Summer Fair, 2-4pm
- 6th July—Reports
- 7th July—Yr 1 & Yr 2 trip to a strawberry farm
- 7th July—Yr R class assembly
- 9th July—Yr 2 class assembly
- 15th July—Helpers Tea Party, by invitation only
- 20th July—Class parties
- 21st July—Leavers church service @ 9am
- 21st July—End of Term @ 2pm

For these and other dates:

[Online Calendar](#)



# Values News



“ Trust in God with all your heart”  
Proverbs 3:5

This term our focus value is trust, we have explored what trust means and how if we follow our rainbow rules it makes it easier for people to trust us. We heard about the story from the Bible about Rueben who trusted Jesus to heal his servant, when many other people didn't. Last week it was earth day and God trusted Christians to look after the wonderful world. We looked at ideas for how we could look after the planet.

This week we explored the story of the boy who cried wolf and how it is much easier to trust people who are honest.

**Who do you trust and why?**

**Are you trustworthy?**

## Celebrate Success



**Recent star learners are:**

**Rabbit class star learners are Alice, Jessica & Ben**

**Fox class star learners are Willow, Rowan & Kara**

**Badger class star learners are Thea, Stan & Hughie**



# School Attendance

Regular



Punctual



Prepared



Please remember how importance school attendance is.

As the season begins to change and we all come together inside we do start to see germs spreading again. We still encourage good regular handwashing and use ventilation in classrooms to try to limit the spread.

You may find this NHS website page useful for information about school attendance.

## Is my child too ill for school?

Please note if your child does have sickness or diarrhea then the child must remain home for 48 hours from the last episode. This helps to limit the spread of germs and saves others from the same experiences. We will send them home again if they return to school too soon.



## Safeguard-

### Safeguarding

If you are concerned about the safeguarding of a child at any time, please contact Surrey children's single point of access C-SPA on

:0300 470 9100

For out of hours see our [website](#).

During school hours you can contact the school Safeguarding leads Mrs. Stevens or Mrs. Ireland [DSL@stjohnsfarnham.surrey.sch.uk](mailto:DSL@stjohnsfarnham.surrey.sch.uk) or

telephone 01428 713216

# Hello!

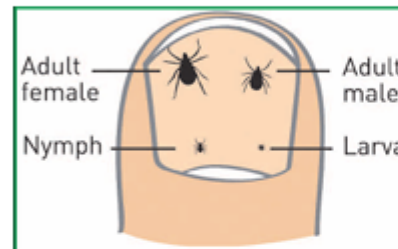
Welcome to Mindworks Surrey, the new emotional wellbeing and mental health service for children and young people in Surrey.



## RISK ZONES

- ◆ Woods
- ◆ Long grass
- ◆ Undergrowth
- ◆ Moors and heaths

...across the UK - town and country



Ticks are larger after feeding. Before that they can be as small as a full stop on this page.

## TICK REMOVAL

- ◆ Do it as soon as possible
- ◆ **DO NOT** squash the tick or apply any creams, oils or heat to the tick (if you put a tick under pressure, you may pump its saliva and stomach contents into you!)
- ◆ Use a **tick removal tool** to ensure you remove all the tick
- ◆ Dispose of the tick down the sink, avoiding getting any tick fluids on bare skin
- ◆ Remember you have been bitten and see your doctor if you develop symptoms

# Mental Health and Well being

There is help available to those in need of support The guide was co-developed by partners across Surrey County Council, NHS Surrey Heartlands Integrated Care Board (ICB) and Mindworks.

[Quick Guide to Mental Health Support for Children, Young People & Families](#) This guide is here to help children, young people, and families in Surrey find the right mental health support when it's needed most. Whether they are feeling anxious, overwhelmed or worried about a friend, they're not alone - help is always available.

Click on the image to go to the full [Mindworks](#) page

# Hello!

Welcome to Mindworks Surrey, the emotional wellbeing and mental health service for children and young people in Surrey.

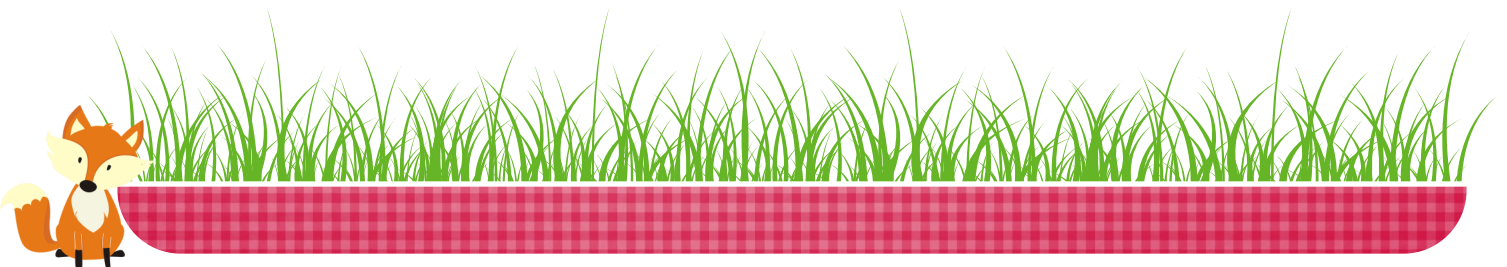


## *Mental Health crisis line*

There is a free 24/7 mental health crisis line for children aged from six years, young people and their families/carers who are in crisis. Please call [0800 915 4644](#) to talk with a professional who will provide advice, support and signposting to a range of community services. It's open all day and all night, seven days a week.

The crisis line can be used by everyone aged 6 and above in Surrey and [NE Hampshire](#).

The number [0800 915 4644](#) is the same telephone number as the adult mental health crisis line - simply select option one.



# Our Community

Kindly sponsored by

**KEBUR**  
GARDEN MATERIALS

  
**Phyllis Tuckwell**  
Hospice Care  
...because every day is precious

**2026 open GARDENS**  
in aid of Phyllis Tuckwell

**Saturday 30<sup>th</sup> & Sunday 31<sup>st</sup> May**  
**1.30pm-5.30pm**

Adults £8 pre-booked or £10 on the day (children U16 free)

**Churt Open Gardens**

For more information and to buy tickets:  
[www.pth.org.uk/event/open-garden-churt](http://www.pth.org.uk/event/open-garden-churt)



Phyllis Tuckwell, Waverley Lane, Farnham, Surrey GU10 3BE.  
Phyllis Tuckwell Memorial Hospice (UK) Registered Number 136-8529. Registered Charity Number 264291.

 Registered with  
**FUNDRAISING  
REGULATOR**



# Our Community



**ALPHA**

# **TRAMPOLINE CAMP**

Trampoline, double-mini,  
gymnastics, airbag, games and  
more!

**TUESDAY 26<sup>TH</sup> MAY**  
**WEDNESDAY 27<sup>TH</sup> MAY**  
**FRIDAY 29<sup>TH</sup> MAY**

Full day and half day  
options available

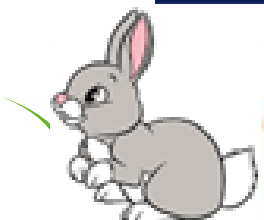
**Book now!**

**MORE INFO**

07903 369179 

[alphatrampolineclub@gmail.com](mailto:alphatrampolineclub@gmail.com) 

Based at Eggar's School,  Alton



# Our Community



## Pottery Painting Workshop

Join us for a relaxed, creative pottery painting workshop for all ages.

Choose from a range of ready-to-paint pottery and personalise your piece. No experience needed!

Finished items will be glazed and fired, ready to enjoy or gift.

**SATURDAY 13<sup>th</sup> JUNE**

90-minute sessions available by booking, with a £2.00 session fee. Pottery pieces from £12.50.



To find out more, scan the QR code above.



## Prosecco & Paint Workshop

Sip prosecco, have some nibbles, and paint your very own pottery piece. No experience needed!

Choose from a stunning hand-thrown vase, serving bowl, or platter.

Your finished piece will be glazed and fired, ready to treasure or gift.

£40 per person includes:  
Complimentary glass of prosecco, pottery piece of your choice & nibbles

**THURSDAY 25<sup>th</sup> JUNE**  
**7-9:30PM**



To find out more, scan the QR code above



## Our Community

# ADVENTURE

## at ALICE HOLT THIS HALF TERM

### WILD PLAY HOLIDAY CLUB

10.00-4.00 School Years 1-6 £50/day

Alice Holt Forest  
Bucks Horn Oak  
GU10 4LS

Activities can include:

- Den building
- Track & trail
- Survival skills
- Fire lighting
- Wide games
- Rope courses
- Craft skills
- Storytelling

We take  
childcare  
vouchers

[www.wild-learning.net](http://www.wild-learning.net)



# Our Community



Undershaw Education Trust  
Portsmouth Road  
Hindhead  
GU26 6AQ

- Baby & Pre-School Swimming
- Swim Academy
- Private Lessons
- Adult Only Swimming & Coaching
- Holiday Courses
- Max. Group sizes of 4-1 per class

← All Ages & Abilities

**Mermaid & Pirate** Birthday Parties

Contact Kyle : 07599657441 - [itisbkleb@gmail.com](mailto:itisbkleb@gmail.com)  
[www.funflippers.co.uk](http://www.funflippers.co.uk) [facebook.com/funflippers](https://facebook.com/funflippers)  
DBS Checked • Swim England accredited



# Our Community

## Churt Community Pavilion Modernisation Project "Buy a Brick" Scheme



Our goal is to transform the pavilion and to create a flexible location that supports not only our local sports clubs but also our wider community – a place for us all!

We have raised almost 80% of the total that we need to complete the current scope of the project, but we need to raise more to ensure that our project team can deliver a building that not just meets our needs but exceeds our original goals.

This is your chance to join the growing numbers of grant funding organisations and local residents who have supported us with our project.




### Buying a Brick

By **buying a brick** you will be helping us to bridge the current shortfall in our funding and have a lasting and visual record of your support. Each brick will be etched with your own specific inscription.

### Our brick slips

We will be installing the brick slips inside the pavilion to ensure that they are protected from the elements and visible to all. To retain the light and airy feel of the social area, the bricks will be light stone in colour and etched in navy; except for the "Golden bricks" which will be etched in gold.

There are 4 options to choose from - 2-line brick—£100 4-line brick—£250 6-line brick—£500 6-line brick etched in gold—£1,000 [or above]	Each line can be made up of up to 16 characters [including spaces]. For example, if you select a 6-line brick but only use 4 lines, your inscription will be centred. 
--	---

### Gift Aid

Using gift aid means that for every pound you donate the Recreation Ground Trust gets an extra 25p from HMRC, so for every £100 donation we will receive £125 which will help reduce our shortfall and it won't cost you an extra penny!

### Higher rate tax-payers

UK higher rate tax-payers can also reclaim tax on charitable donations so for every £1000 invested after tax relief the cost is reduced to £550.

If you are a **UK Tax-payer** for Churt RGT to claim Gift Aid, we will need you sign a simple declaration:

For more information about etching and inscriptions and how to buy a brick please contact [fundraising@churt.org](mailto:fundraising@churt.org)

For more information about the wider project – please visit [www.churt.org](http://www.churt.org)

Churt Recreation Ground Trust is the registered charity and owner of the pavilion and recreational ground. Churt Parish Council is the sole Managing Trustee for the Recreation Ground Trust and carries out works to maintain and improve the facility for the benefit of our wider community. Churt Recreation Ground Trust is a Registered Charity Number 305005



# Our Community

## half term

farnham maltings

embrace craft, dance, beatboxing and theatre  
with our fantastic half term activities



**Tue 26 May**

Artbox: Creative Art Workshop - 6-16yrs, 10am

Fruit Salad Jewellery Workshop - 8+ yrs, 1pm

**Thu 28 May**

K-Pop Dance Workshop - 7-11yrs, 10.30am

Peacock Painting in Acrylics - 7+ yrs, 1.30pm



**Wed 27 May**

Beatboxing Workshop - 7-11 yrs, 10.30am

Screen Print Animals Workshop - 6+yrs, 10.30am

Screen Print your own Flag Workshop

- 6+ yrs, 1.30pm



**Wed 27 - Thu 28 May**

Crafty Kids at the Museum of Farnham -

Drop-in craft sessions - 3-7 yrs | 10.30am - 12.30pm



**Fri 29 May**

Cupcake Decorating: Creepy Caterpillars &  
Beautiful Flowers - 5-12 yrs, 10.30am & 1.30pm

**Fri 29 May**

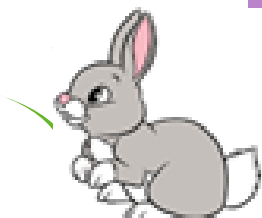
Theatre: Rabbits out of the Hat

Age 5+ | 10.30am

In 1905 it's time for a magician to chase new  
dreams while the assistant calls the shots in this  
magic, musical extravaganza.



[farnhammaltings.com/whats-on/half-term](http://farnhammaltings.com/whats-on/half-term)



# Our Community

We are still looking for a Crossing Patrol Officer who could support the children safely across Barford Lane in the morning and afternoon.

Surrey County Council

would accept a job share for this position. For more details [Click here](#)



St John's C of E Infant  
School  
Barford Lane  
Churt  
Farnham  
Surrey  
GU10 2JE

Phone: 01428 713216

E-mail:  
[office@stjohns-  
farnham.surrey.sch.uk](mailto:office@stjohns-farnham.surrey.sch.uk)

