

St John's C of E Infant School
Enquiring Minds and Open Hearts
Number 9
20th November 2020

IMPORTANT DATES
2020

3 rd Dec	Post box in the library for cards for each class
4 th Dec	Flu Immunisation
11 th Dec	Winter wonderland walk dress warmly and Christmas jumper
16 th Dec	Christmas lunch Party clothes
18 th Dec	End of term 2pm
4 th Jan	INSET DAY
5 th Jan	Start of Term
15 th Jan	Closing date for school applications
12 th Feb	End of Half-Term
22 nd Feb	Start of Term
23 rd Feb	Police visit
24 th Mar	Year 1 workshop at Guildford Cathedral TBC

Why did we wear odd socks?

On Monday we arrived at school wearing our favourite odd socks, acknowledging we are all different and that we wish to live in peace and harmony bringing an end to bullying of any kind. Our odd socks reflected our personalities and how unique

we all are. Our Year 2's produced some inspiring work about ways to end bullying and why we should end bullying.



They knew that it should end because it would cause harm to both our bodies and minds. That you should speak out

if you are being bullied or you know anyone is being bullied.

It was so fantastic to hear the children articulating that following our rainbow rules would mean that there would be no bullying and the world would be a better place. They also referenced that they could turn to God for help. You make us so proud and we know that as a result you will be the ones making changes for the better in our world. They articulate it so well here are just a few examples.

Evie – “Stop Bullying people because it's bad for your body and mind. Don't bully people because you are not following the rainbow rules. So be kind to others and let your light shine.”

Thom- “The world would be better if we are kind and respectful and you have the right to speak out”

Reuben “God will help you as you go. Stop others by glowing as much as you can”

Raphy “To stop bullying be thoughtful and kind.”



Your collection for Children in Need raised a fantastic £100! Thank you very much.

Early next week we will be sending you information details on plans for a school Christmas and how we will be celebrating this year. We will also be providing an update on our recovery curriculum and how the children are progressing and the plans in place to support their learning both in and out of school.



Values News

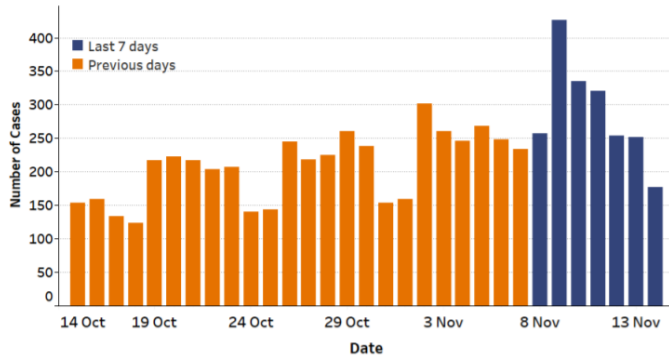
Our focus value is Peace "may peace be with you"

As we celebrate each other's differences and what a wonderfully diverse world we live in, we are reminded to strive for peace in all we do. We wish to be the peacemakers to be the role models. We discussed how letting your light shine helps to spread the message to others. We celebrated the peacemakers in our school this week as we had so many in the Golden Book. Well done to Rosie, Darcey and Chloe in Foxes for your kindness and compassion. To Evie, Claudie, Lachie, Finley and Henry C in Badgers for your kindness and compassion that leads to a peaceful community.

Covid update

Surrey COVID-19 Cases

Daily Cases



All data is publicly available. Data is shown by specimen date - reporting delays mean data can be incomplete for the most recent days. For this reason the data shown is for the seven-day period ending five days prior to the publication date. The rate is calculated daily by Surrey County Council Public Health data intelligence team using the ONS 2019 mid-year population estimates. For more detail please refer to the Surrey COVID Intelligence Summary at www.surreycc.gov.uk/covidcases and www.coronavirus-data.gov.uk

Publication Date:
Thursday 19 November 2020



New cases in last 7 days

2,020

Rate for the last 7 days*

168.9

Data shown for time period Sunday 8 November 2020 to Saturday 14 November 2020

*Rate represents number of cases per 100,000 population for the last 7 days
Arrows indicate the absolute difference compared to the previous 7 days

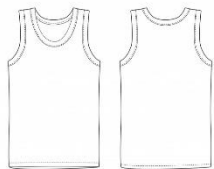
	Cases (7 days)	Rate (7 days)
↑ Spelthorne	250	250.4
↑ Epsom and Ewell	191	236.9
↑ Runnymede	211	236.0
↑ Surrey Heath	147	164.6
↑ Woking	163	161.7
↑ Reigate and Banstead	229	154.0
↑ Tandridge	134	152.0
↓ Mole Valley	131	150.2
↑ Elmbridge	201	146.9
↓ Guildford	210	140.9
↑ Waverley	153	121.1
↑ Surrey	2,020	168.9
↑ South East	17,223	187.6
↑ England	153,214	273.3

Cases in Surrey continue to rise this week. You must continue to follow guidelines and adhere to regulations. We must keep everyone safe. You must adhere to the rules and limit your contact with other households. You can access information on the number of cases in the area on a new Surrey page.

<https://www.surreycc.gov.uk/people-and-community/emergency-planning-and-community-safety/coronavirus/alert-levels-and-local-outbreak-plan/figures-and-statistics/daily-data>

If anyone in your household is experiencing symptoms the household must stay at home and get a test. Everyone must stay home until the result is received.

- Remember to contact us even if it is a weekend or evening on the office email if you need to inform us if anyone in your household is experiencing symptoms and going for a test or if your family have been in close contact with a positive case and you need to self-isolate.
- Thank you to everyone for wearing masks on the site to protect families and staff we do have people who are vulnerable so it is really important.



- We are ventilating rooms as much as possible so please make sure your child is dressed warmly, vests may be necessary.
- Each child must also have a warm waterproof coat in school at this time of year. A fleece is no longer enough for an outdoor coat but can be used as an additional layer if cold indoors.



For the duration of the lockdown, Hedgehogs will move location to the hall, where children can be given separate spaces and resources. **If you are collecting from Hedgehogs, you will need to collect by entering at the front gate and meet your child at the hall door.**

Stay safe, well and wonderful,

From The St John's Family

Community News



St Albans Hindhead
97 subscribers

<https://www.youtube.com/channel/UCZkgadiz6ASqZZS-GzYcEmg>

Please remember you can join in with the church services from St Albans each week on YouTube.

Due to a requirement to change the term "nearest school" in our admissions policy for 2022 we are now consulting on the proposed changes. Please see our website for further information.

<http://www.stjohnsfarnham.surrey.sch.uk/Admissions>



Drive-In Cinema at The Duke of Cambridge!

Join us for a contact-free American movie theatre experience, this Christmas! We're hosting 3 days of festive movies, played on a large cinema screen in the field next door to our pub, where you'll be allocated a parking space and given an in-car Bluetooth speaker. What better way to get into the festive spirit? Simply park up, sit back in your car chairs and enjoy a Christmas classic as a family.

Tickets selling fast, book yours now: <https://bit.ly/32XWqOd>

SATURDAY 19th DEC:

🎬 Frozen - 12pm, 🎬 Arthur Christmas - 3.30pm, 🎬 How the Grinch Stole Christmas - 7pm

SUNDAY 20th DECEMBER:

🎬 Klaus - 12pm, 🎬 The Muppet Christmas Carol - 3.30pm, 🎬 The Santa Clause - 7pm

MONDAY 21st DECEMBER:

🎬 The Polar Express - 12pm, 🎬 Home Alone - 3.30pm, Elf - 7pm (SOLD OUT)