

# St John's C of E Infant School

## Latest News Newsletter 7th July 2023

We were blessed this week with the most perfect weather for sports day. When speaking with the children we decided it was not too hot, it was not too cold it was just right!

Thank you all for your kind words it is always such a joy to see children being proud of their achievements we had worked hard on being a "good sport" and trying to do something that was for you, your personal best. The children were all amazing and you were a fabulous audience cheering everyone on.



See below for dates that the new nursery in Churt is holding some open days and spread the word.

Reports will go out on Monday 10th July please check your child's book bag. Details about a drop in session or how to make an appointment if you need one after reading the report will be on a letter inside the envelope. You are welcome to come in and see books or wander through to their new classroom and introduce yourself to the teacher.

Our afterschool hedgehogs club will open for Autumn bookings at 12pm on Monday 17th July.

*We really need to ask for some parent volunteers to help with our forest school sessions next year, we are returning to Fox class on a Thursday afternoon, and Badger Class on a Friday afternoon. If you can help every week or we could have a rota, but we really need some help. We have one volunteer so far.*

Please can I remind people that we need to clear the playground swiftly after school as there are clubs using the areas. Please head to the park to continue playing with your friends.

Marion Stevens



### Dates

- 4th July— New parents induction evening at 7pm
- 5th July— Sports day & picnic lunch at 12.30pm
- 7th July— Yr. 1 school trip
- 9th July— Summer Fair
- 10th July— Reports
- 13th July— drop in parents evening. Appointment available if required
- 18th July— Helpers Tea Party, by invitation only
- 19th July— Class Parties
- 20th July— Leavers service 9am at the church
- 20th July— Last day of term, 2pm finish
- 1st Sept— INSET day
- 4th Sept— school opens

For these and other dates.

[Online Calendar](#)



# St John's C of E Infant School

## Newsletter 30th June 2023



### Latest News

There are a growing number of incidence of tick bites so please be vigilant. We are seeking advice on how schools are advised to deal with this if spotted during the school day. Currently we would look to see if it is recently landed and brushed off. Unfortunately if it is embedded we do give parents a call to ask them to either pop in and remove the tick or if they have been made aware you may choose to leave it until the end of the day. We will say once the child knows it is there they do tend to want it removed. We are told the warmer weather is the reason for the increased numbers of these pests.

## WATCH OUT! TICKS ABOUT!

www.LymeDiseaseAction.org.uk

### RISK ZONES

- Long grass
- Undergrowth
- Woods
- Moors and heaths
- Urban parks & gardens

...across the UK

**Walkers, campers, gardeners - beware!**

Ticks are larger after feeding. Before that they can be as small as a full stop on this page.

### LYME DISEASE

Some ticks carry Lyme disease and they can inject the bacteria into you when they take a meal of blood.

Symptoms may appear between 2 and 30 days after the bite and may include:

- Feeling unwell with 'flu-like symptoms
- Extreme fatigue
- Muscle or joint pain
- Muscle weakness
- Viral-like meningitis
- Headache
- Facial palsy
- Disturbances of sight, hearing, digestive system or sleep
- A slowly spreading rash which may look like a "bull's eye", called an erythema migrans. If you get a rash, photograph it for your record

Lyme disease is treated with antibiotics: the sooner the better.

### TICK REMOVAL

- Do it as soon as possible
- DO NOT** squash the tick or apply any creams, oils or heat to the tick (if you put a tick under pressure, you may pump its saliva and stomach contents into you!)
- Use a **tick removal tool** to ensure you remove all the tick
- Dispose of the tick down the sink, avoiding getting any tick fluids on bare skin
- Clean the bite site with soap & water or antiseptic
- If you develop a rash or symptoms, see your doctor and tell them you were bitten

### STAY SAFE

- Try not to brush against vegetation
- Keep your legs and arms covered
- Brush clothing & pets off before going inside
- Check areas not easily seen: back of leg, back, hairline. Don't rely on sight: tick bites are painless and can go unnoticed
- Buy a tick remover from LDA, vet or pet shop

### Dates

- 4th July— New parents induction evening at 7pm
- 5th July—Sports day & picnic lunch at 12.30pm
- 7th July—Yr. 1 school trip
- 9th July—Summer Fair
- 10th July—Reports
- 13th July—drop in parents evening. Appointment available if required
- 18th July—Helpers Tea Party, by invitation only
- 19th July—Class Parties
- 20th July—Leavers service 9am at the church
- 20th July—Last day of term, 2pm finish
- 1st Sept—INSET day
- 4th Sept—school opens

For these and other dates.

[Online Calendar](#)

# Values News



What happens when we fall out?

Therefore encourage one another  
and build each other up.

-1 Thessalonians 5:11

This week we looked at what happens when we fall out . How can we be friends again. We talked of making compromises and reconciliation.

We looked at a zip and how it can be split apart and it is okay by itself however it is much stronger and works better when the 2 halves of the zip are joined together. Just like friendship we are okay on our own but things are much better and we feel stronger if we are joined together with others.

Using your values and your rainbow rules can help you when your fall out with friends. They can bring the two halves of the zip back together and make one strong whole piece.

**" Trust in God with  
all your heart."**

**Proverbs 3:5'**

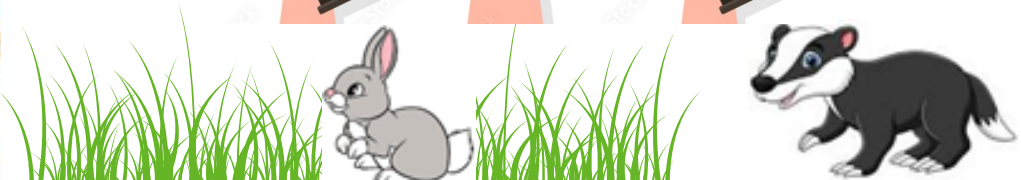
**Have you fallen out with a friend?**

**Did you have to compromise?**

**Did you use your values to make up with your friend?**

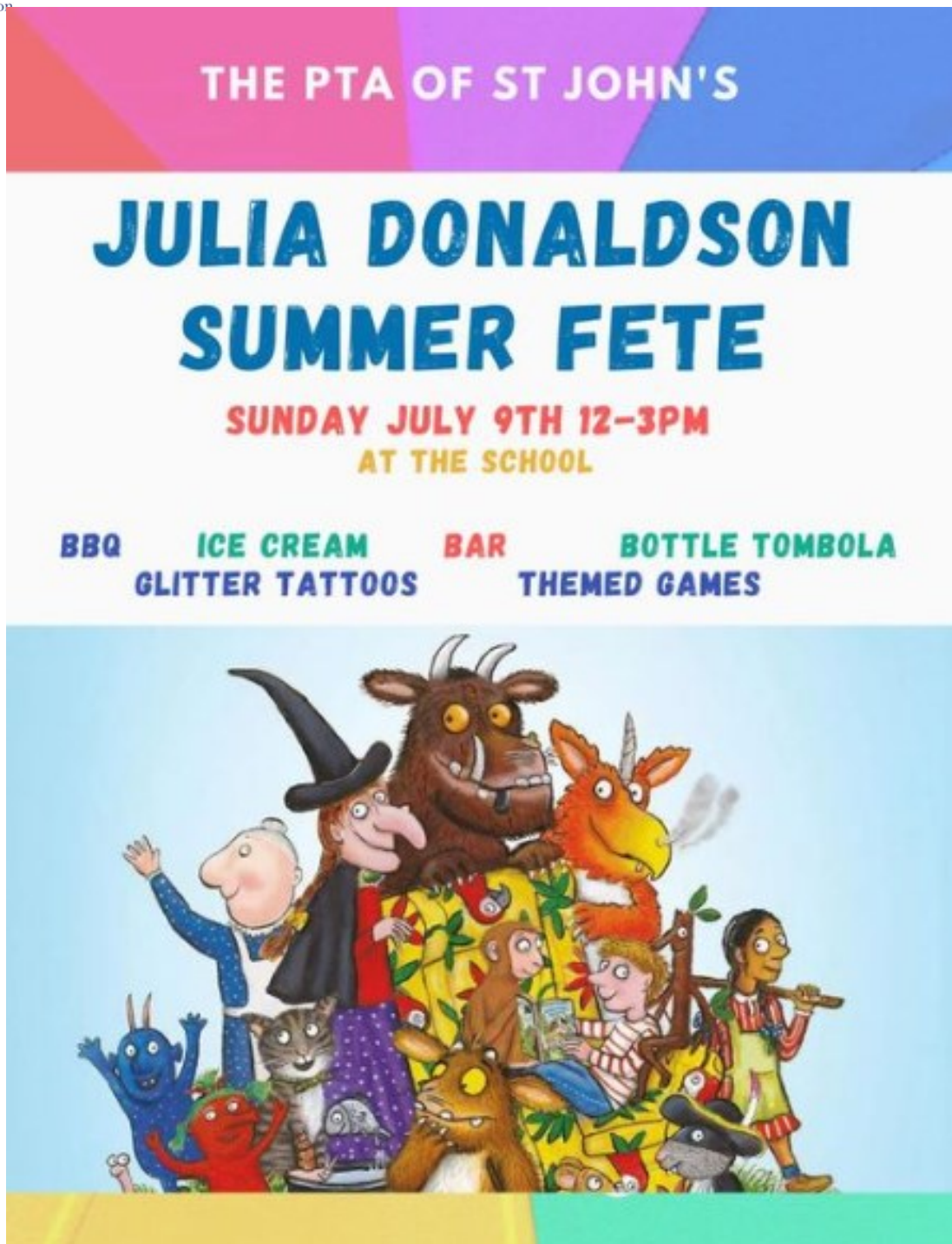
## Celebrate Success

**You are all "good sports" this week we are  
so very proud of you!**





# PTA Fayre Sunday 9th July

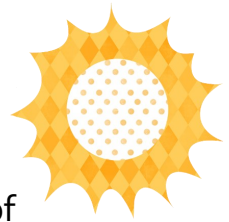


New PTA team have a new email address so please do get in touch

[ptachair@stjohns-farnham.surrey.sch.uk](mailto:ptachair@stjohns-farnham.surrey.sch.uk)



# School Attendance



Please see our school calendar for next years term dates. We ask you to be mindful of these when booking your holidays. [Term times 2023– 2024](#)

Please be aware that the Education Regulations 2013, which became law on 1 September 2013, state that Headteachers may not grant any leave of absence during term time unless there are **exceptional** circumstances. Examples of exceptional circumstances, quoted by the Department for Education (DfE), are: **service personnel and family crises**. Family holidays taken during term time for example due to affordability or work restrictions do not meet the DfE criteria for authorisation.

If you do need to request an absence please remember to complete a request for absence form before the date of absence otherwise there will be safeguarding concerns for the whereabouts of your child. It can be found on page 4 of the policy. [Request for absence](#)



## Safeguarding

### Safeguarding

If you are concerned about the safeguarding of a child at any time, please contact Surrey children's single point of access C-SPA on

:0300 470 9100

For out of hours see our [website](#).

During school hours you can contact the school Safeguarding leads Mrs. Stevens or Mrs. Ireland [DSL@stjohnsfarnham.surrey.sch.uk](mailto:DSL@stjohnsfarnham.surrey.sch.uk) or

telephone 01428 713216

### Wellbeing

If you know a family, child or young person in need of help. You might like to point them in the direction of the Surrey website <https://www.mindworks-surrey.org/>

The children's mental health charity, Place2Be, has a website aimed at helping parents with typical situations they can find themselves in with their children. The Parenting Smart website can found [here](#):

# Hello!

Welcome to Mindworks Surrey, the new emotional wellbeing and mental health service for children and young people in Surrey.



# Our Community



## Dottie Tots Churt Nursery School Open Day

We are very excited to announce an open day for our Dottie Tots Churt Nursery School, which will be opening from September 2023 at the beautiful Churt Village Hall.

Come along between 9.30am-11.30am on Wednesday 19th July 2023 to see the homely and open environment we have created for all the children to explore and grow. To book in for the open day, ask any questions or register your child for a place please contact [Sophie@dottietots.co.uk](mailto:Sophie@dottietots.co.uk)

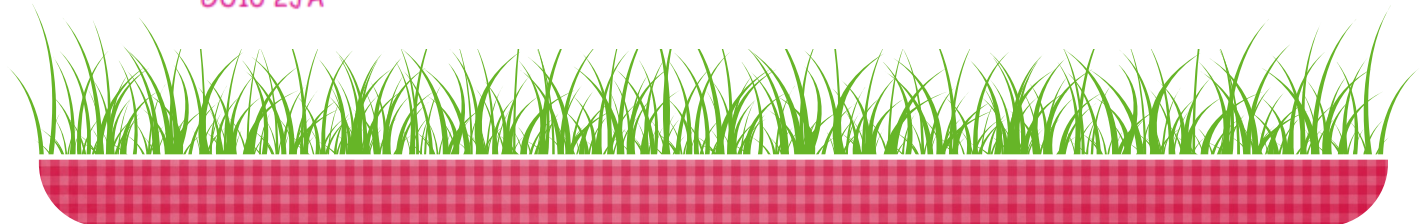
The philosophy of all our settings is to provide child-centred education with a heuristic approach to learning and development. We aim to nurture the uniqueness of each child and meet individual needs through a relaxed learning atmosphere, where children feel safe and secure; whilst becoming confident, self motivated, and autonomous learners, through their play and exploration.

At Churt, there will be the opportunity to utilise your full 15 or 30 hour funding entitlement for 2, 3 and 4 year olds.

The Nursery will be open for 51 weeks of the year Opening; 7:30am to 6:00pm Monday to Thursday, and 7:30am to 4:30pm Fridays.

Churt Village Hall,  
Crossways, Churt,  
Farnham,  
Surrey,  
GU10 2JA

[www.dottietots.co.uk](http://www.dottietots.co.uk)





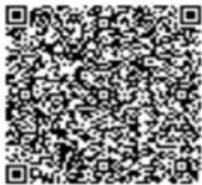
## Our Community

# Wishanger Wild School

Forest School for all ages



Check out our  
sessions



**Smithfield Lane  
Between  
Headley and  
Churt**

Toddlers, Older  
children, Home Ed  
families, Foraging and  
Workshops

**Sessions for Children from confident walkers upwards**  
<https://www.wishangerwildschool.co.uk>

# Our Community



Families  
Online  
July/August

**Twelve15** **JOIN OUR TEAM**

Looking for a secure local term-time only position with great work/life balance and benefits?

Twelve15 is part of Surrey County Council, it has a range of job opportunities. Twelve15 has been delivering high quality and nutritious school meals for over 70 years.

Please [click here](#) to find out more about our current vacancies and apply. We look forward to hearing from you.



# Our Community

**Let's go!**

**SUMMER HOLIDAY FUN FOR 4½ - 14 YRS**

**EXTRA \*£10 OFF QUOTE SCHOOL10**

\*Minimum 2 days

Giving every child such an **AMAZING** experience they can't wait to come back!

Visit [barracudas.co.uk](http://barracudas.co.uk) or call 01480 467 567

**PLACES BOOKING UP DON'T MISS OUT!**

**80+ ACTIVITIES CHOICE FOR EVERY SESSION**

**BOOK NOW!**

DID YOU KNOW? YOU CAN CHANGE YOUR DATES RIGHT UP UNTIL 14 DAYS BEFORE YOUR BOOKING BEGINS! \*SUBJECT TO AVAILABILITY

**Recommend a Friend**  
Earn £20 for you, £20 for your friend!

Facebook, Instagram, Twitter, Trustpilot (5 stars)

Ofsted Good Provider, Ofsted Outstanding Provider

## Summer activities for children and families

at Haslemere Educational Museum

78 High Street, Haslemere, GU27 2LA

[www.haslemere-museum.co.uk](http://www.haslemere-museum.co.uk)

### MUSEUM EXPLORERS

Activities for children aged 5-11, based around our collections and exhibitions. Parents do not need to stay.

Members £5	Non-members £7	Accompanying adults £2
<b>Get Buzzing!</b> Come along and learn about our bees, visit the observation hive and take part in some bee related craft activities. Sat 1 July   10.30-12.00		
<b>Creative with Clay</b> Join ceramicist Jan Hite for clay workshop linked to our summer exhibition of British wildlife. Thu 27 July   10.30-12.00		
<b>Wildlife Dioramas</b> Join us to make a 3D scene inspired by our British wildlife exhibition. What creatures will you add? Thu 2 August   10.30-12.00		
<b>Woodland Wonders</b> Inspired by our summer exhibition join us for some creative wildlife inspired crafts. Tue 8 August   10.30-12.00		
<b>Lego Challenge</b> Join Brilliant Bricks for an exciting morning of Lego linked to our summer exhibition of British wildlife. Integral explorers Betty and Brad are on an adventure around Britain discovering new animal and plant life. Build how they lived around and the things they discover. Sat 15 & Thu 24 August   10.30-12.00		
<b>Tolkien Fantasy</b> 50 years after his death join us for a morning of Tolkien based activities. Sat 7 September   10.30-12.00		

**Book your tickets now**

at [haslemere-museum.arttickets.org.uk](http://haslemere-museum.arttickets.org.uk)

If you are unable to book online, please call 01428 642112 for assistance



## FAMILY EVENTS

### Family Exhibition: British Wildlife

A family-friendly exhibition celebrating British wildlife. Something for all ages.

6 July-2 September | 10.00-17.00 | Tue-Sat | Donations



### Brilliant British Wildlife

Join us for a morning of art and crafts inspired by our summer exhibition on British Wildlife.

Tue 25 July | 10.30-13.00 | £4 | Members £2 | Accompanying adult £1

### Falconry Display

The Falcon High Falconry Display Team will be here so you can experience the beauty of these birds in flight. With talks and static display so you can experience real close up encounters with these beautiful birds. Flights subject to weather. Booking advisable. Price per person.

Wed 2 August | 12.00-16.00 | £5 | Members £2

### Early Birds

Special opening for families with children who have an Autism Spectrum Condition to come along and enjoy the Museum free from the hustle and bustle of the general public. The galleries will be open and there will be an opportunity to handle special objects. Booking essential.

Mon 7 August | 11.00-13.00 | By donation

### Meet the Tortoise

Meet the tortoise and ask our expert, Jane Chaffield your questions about tortoises. 25 minute sessions to control numbers. Booking essential.

Tue 8 August | 10.30-16.00 | £1



### Teddy Bears' Picnic & Mini Fete

Enjoy a fun-filled afternoon with a traditional picnic and mini fete in our beautiful garden. There will be games, stalls and more. Bring your teddy for a photo with the Museum's famous mascot Arthur the bear and enter our competition for best Wildlife Explorer dressed Teddy. Children's picnic teas must be ordered in advance.

Thu 16 August | 12.30-16.00 | Free entry | Children's tea £5

### Outdoor Theatre:

#### The Tale of Peter Rabbit & Benjamin Bunny

Join Peter and his naughty cousin Benjamin on their hair-raising adventures in Quantum Theatre's delightful adaptation of Beatrix Potter's much loved Tales. A theatre performance for the whole family in the Museum's beautiful grounds. Doors open 5.30pm. Please bring a blanket to sit on.

Wed 15 August | 18.00 | Adult £10 | Child £10 | Family of 4 £40

### Lego!

Join Brilliant Bricks for an exciting morning of Lego linked to our summer exhibition of British wildlife. Build whatever your imagination invents!

Thu 17 August | 10.15-11.30 | £5 | Members £3 | Accompanying adult £2



### Circus Skills

A day of circus skills workshops run by Primary workshops for schools. Two short demonstrations at 10.30am and 1.15pm. Workshops throughout the day. Children will need to be accompanied by an adult and if the adult would like to participate, they will need to book a space. Non-participating adults only need to book an accompanying adult ticket.

Tue 22 August | See above | £5 | Members £3 | Accompanying adult £1

### Fantastic Fossils

Explore the fossils in our handling collection and take part in some fossil arts & crafts.

Tue 29 August | 10.30-13.00 | £4 | Members £2 | Accompanying adult £1

# Our Community

We are still looking for a Crossing Patrol Officer who could support the children safely across Barford Lane in the morning and afternoon.

Surrey County Council

would accept a job share for this position. For more details [Click here](#)



St John's C of E Infant  
School  
Barford Lane  
Churt  
Farnham  
Surrey  
GU10 2JE

Phone: 01428 713216

E-mail:  
[office@stjohns-  
farnham.surrey.sch](mailto:office@stjohns-farnham.surrey.sch)

